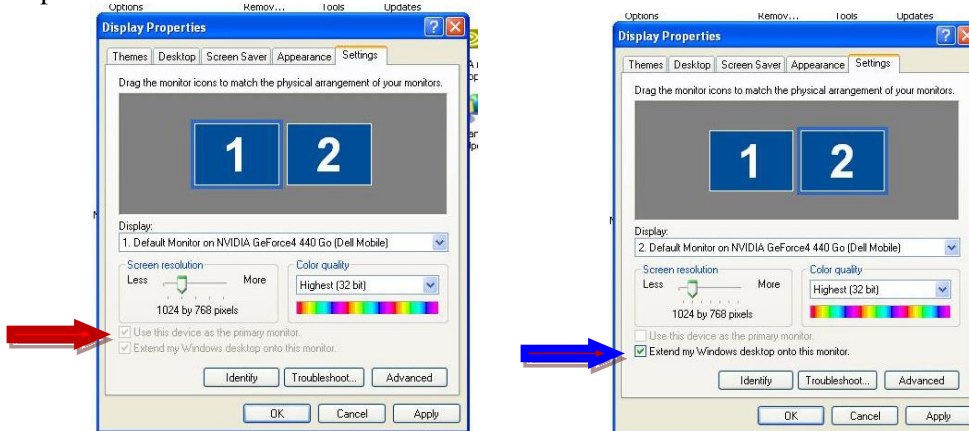


## BOARDWARE3 with Virtual Serial Ports

Welcome to BOARDWARE3 for Windows, the software that turns your IBM-compatible computer into a scoreboard display. With Virtual Serial Ports, you can run BOARDWARE3 on the same computer as TIMEWARE, MEETWARE or POLOWARE. Note: If you are running BOARDWARE3 on a desk top computer, you must have a second video card for the projector.

Before installing BOARDWARE3, check the display settings on your computer. **Note: Options and displays may vary with computer manufacturers and video cards.**

1. From the Windows Start menu, select Control Panel/Display/Settings. The screen shots below show typical settings for multiple monitors:



2. Click on Monitor 1 and be sure the 2 checkboxes indicated by the red arrow are checked (“Use this device as the primary monitor” and “Extend my Windows desktop to this monitor”).
3. Click on Monitor 2 and be sure the checkbox indicated by the blue arrow is checked (“Extend my Windows desktop to this monitor”).

To install BOARDWARE3, insert the USB Thumb drive into your computer. Once the drive has been recognized, open the drive and right click on the **setup.exe** (application) file. Select “Run as Administrator” from the menu. As the install program goes through the steps, we recommend you accept all of the defaults.

### Before opening BOARDWARE3 for the first time, complete the following steps to install the virtual serial ports:

1. On your computer go to C:\BOARDWARE3\VSP.
2. Right click on the INSTALLAX.bat file and select RUN AS ADMINISTRATOR from the menu.
3. At this time, the **Eltima Virtual Serial Ports (VSP) will be installed. When prompted, click YES or OK on any messages that pop up.** Be patient—the installation may take a few minutes, but once it’s done you won’t have to do it again. The VSP allow your TIMEWARE, MEETWARE or POLOWARE to send the scoreboard data to BOARDWARE3 on the same computer.
4. Close the folder.

### To open BOARDWARE3, right-click on the icon and select Run as Administrator.

The BOARDWARE3 display requires a font that may not be included in your Windows Font Directory. The font name is **Arial Monospaced Bold (arialmb.ttf)**. If you can’t find this font in the directory, follow these steps to install it:

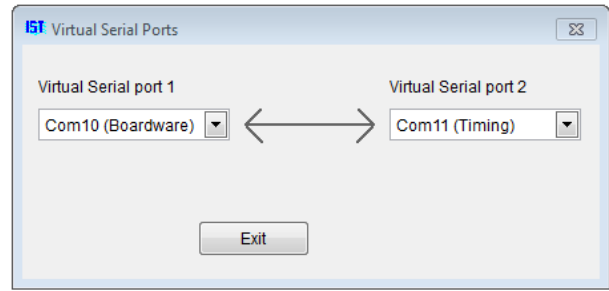
For Windows XP:

- From the Windows Start menu, select Control Panel/ Fonts
- From the Fonts **File** menu select **Install New Font**.
- Select the C Drive, and the Folders BOARDWARE3, LIBS. Highlight the font **Arial Monospaced Bold (arialmb.ttf)**, then click OK.
- 

For Windows Vista or Windows 7:

- From My Computer or Windows Explorer, select the C Drive, and the Folders BOARDWARE3, LIBS. Right-click on the font **Arial Monospaced Bold (arialmb.ttf)** and select COPY.
- Select Control Panel/Appearance & Personalization/Fonts.
- Right-click on the list of fonts and select PASTE.

**NOTE: To get the proper ports assigned, always open BOARDWARE3 before you open TIMEWARE, MEETWARE or POLOWARE.**



4. To start BOARDWARE3, double click the icon on your desktop. (If you have speakers on, you will hear a tone indicating that the Virtual Serial Port (VSP)'s have been installed). The opening screen shows you the port assignments.
5. The default ports are **COM10** for BOARDWARE3 and **COM11** for your timing software. (If these ports are already in use, higher port numbers will be assigned.) **Note the port number assigned to timing for Step 2.** Click Exit. Minimize BOARDWARE3 and open your timing software.
6. Now set up a VSP on your timing software. In TIMEWARE or MEETWARE, go to **Utilities/Setup Hardware**. In POLOWARE, go to Preferences. Set the **Alternate Scoreboard Port** (for POLOWARE, the **Scoreboard Port**) to **COM11** (or the higher number selected). Return to the main screen and minimize the timing software.
7. Restore BOARDWARE3. The next steps set up the user options. Begin by clicking on **Settings**.
8. Select the **User Logo** to appear in the upper left corner of the scoreboard display. Your user logo must be a square or round shape in a GIF, TIFF, ICON or JPG format. From the main menu, select **Settings/User logo**. "Look in" the folder or drive where your logo file is located, select the file name and click Select Logo. You can leave the default IST logo as your user logo.
9. Set the **Number of Lines** to be shown on the scoreboard display. From the main menu, select **Settings/No. of lines on Board**. Set the number equal to the number of lanes in your pool. The scoreboard display will also include a message line above Lane 1.
10. Set the **Colors** for the scoreboard display Text and Background. From the main menu, select **Settings/Colors/Text or background**. From the color pallet shown select the color you would like to use. For maximum visibility, we recommend Yellow text on a Black background. This combination gives you the most contrast making the display easy to read.
11. **Setup Virtual Serial Ports** allows you to change the automatic port settings if necessary.
12. Connect your projector to your computer, following the instructions provided by your projector manufacturer. Turn on the projector and wait till you see it project its default image. On the computer, hold the Function (Fn) key and press F# key that shows CRT/LCD or monitor icons (you may need to press the F# key twice.) The projector will display your desktop wallpaper.
13. Select **File/Run**, and you will see the BOARDWARE3 display on your computer. Click on the Restore Down icon (the double box next to the red X in the upper right corner of the screen). Click and hold on the blue bar at the very top of the screen and drag the display off your computer screen (left or right, depending on your setup) and on to the projector display. Use the mouse pointer to position the display in the projected image.
14. You can now minimize the main screen and open your timing software. To test your scoreboard display, use the **Diagnostics** function in the menu: **Meets/ Diagnostics/Scoreboard** (for TIMEWARE or MEETWARE) or **Match/Diagnostics** (for POLOWARE).
15. To **Minimize** the BOARDWARE3 display, click on the IST logo on the top right. With the scoreboard display minimized, you can also minimize the menu screen to display other Windows programs.
16. To **Restore** the display, click on the **BOARDWARE3** button on the Windows Task Bar.
17. To close the BOARDWARE3 display, click on the logo in the upper left corner of the screen. Maximized BOARDWARE3 and select **File/Exit**. Repeat steps 12-17 each time you want to use BOARDWARE3.

If you need additional help, please don't hesitate to contact us. While we've thoroughly tested BOARDWARE3, it is always possible that you may find a bug in the program. If you could let us know what happened and what you were doing at the time, we can get you a fix as quickly as possible. You can reach us 24 hours a day at our "800" number below. After hours, press "1" to leave a message and have us paged or "2" to just leave a message. Be sure to leave your name, team and a call-back number.



International Sports Timing  
3286 Kentland Ct. S.E.  
Grand Rapids, MI 49548

Phone: 800/835-2611 (North America only)  
Phone: 01 616/247-1033 (Worldwide) Fax:616/247-0086  
Email: [info@istime.com](mailto:info@istime.com)