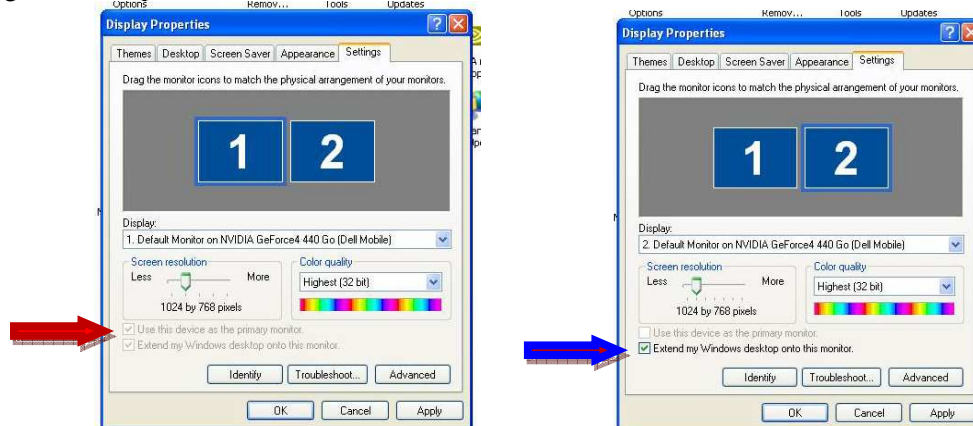


BOARDWARE with Virtual Serial Ports

Welcome to BOARDWARE for Windows, the software that turns your IBM-compatible computer into a scoreboard display. With Virtual Serial Ports, you can run BOARDWARE on the same computer as TIMEWARE 2, MEETWARE or POLOWARE 2. Note: If you are running BOARDWARE on a desk top computer, you must have a second video card for the projector.

Before installing BOARDWARE, check the display settings on your computer. **Note: Options and displays may vary with computer manufacturers and video cards.**

1. From the Windows Start menu, select Control Panel/Display/Settings. The screen shots below show typical settings for multiple monitors:



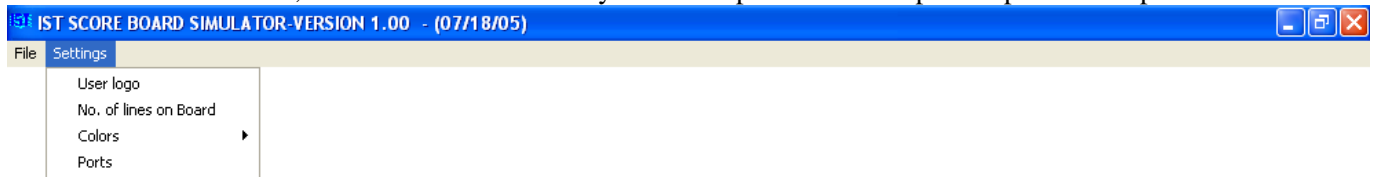
2. Click on Monitor 1 and be sure the 2 checkboxes indicated by the red arrow are checked (“Use this device as the primary monitor” and “Extend my Windows desktop to this monitor”).
3. Click on Monitor 2 and be sure the checkbox indicated by the blue arrow is checked (“Extend my Windows desktop to this monitor”).

To install BOARDWARE just insert the CD into your drive and watch it begin to load. (If it doesn't load automatically, go to Run on the Start menu and select setup.exe on the appropriate drive.) As the install program goes through the steps, we recommend you accept all of the defaults.

Follow these steps to install the Virtual Serial Ports:

1. You must first copy the license information for the Virtual Serial Ports (VSP). Right-click on the Windows Start button and select Explore. Select the drive with the BOARDWARE CD and double click the file called **license.txt** to open the file with Notepad. Now highlight *all* the text, including the leading and trailing dashes (----). Right click on the highlighted text and select Copy. Close the license.txt file.
2. Click on the Windows Start button and select Run. Browse to the drive with the BOARDWARE CD and double click the file called **VS_setup.exe** and click OK. The installation of VSP will begin. Just follow the instructions on the screen, accepting the defaults. When the License Key screen comes up, click “I have a license key and want to install full version.” Right-click in the white space and select Paste, then click Next and Install.
3. If you are connected to the internet, the program will bring up additional on-line instructions. If not, on the next screen headed “Virtual Serial Port Kit”, click on the first connector icon with the large green plus sign. The next screen displays two VSP's to add. We recommend assigning the ports to **COM7** and **COM8**. (If these ports are already in use, select higher numbers.) Selecting high numbered ports will prevent interference with other USB or serial devices. You will now see the two COM ports have a virtual connection.
4. Now set up a VSP on your timing software. In TIMEWARE 2 or MEETWARE, go to **Utilities/Setup Hardware**. In POLOWARE, go to Preferences. Set the **Alternate Scoreboard Port** (or **Scoreboard Port**) to **COM7** (or the lower number selected). Return to the main screen and minimize the timing software.

5. To start BOARDWARE, double click the icon on your desktop. The next steps set up the user options.



6. Select the **User Logo** to appear in the upper left corner of the scoreboard display. Your user logo must be a square or round shape in a GIF, TIFF, ICON or JPG format. From the main menu, select **Settings/User logo**. "Look in" the folder or drive where your logo file is located, select the file name and click Select Logo. You can leave the default IST logo as your user logo.
7. Set the **Number of Lines** to be shown on the scoreboard display. From the main menu, select **Settings/No. of lines on Board**. Set the number equal to the number of lanes in your pool. The scoreboard display will also include a message line above Lane 1.
8. Set the **Colors** for the scoreboard display Text and Background. From the main menu, select **Settings/Colors/Text** or **background**. From the color pallet shown select the color you would like to use. For maximum visibility, we recommend Yellow text on a Black background. This combination gives you the most contrast making the display easy to read.
9. Next select **Settings/Ports**. Set the **Input Port** to **COM 8** (or the higher number selected). Return to the main menu.
10. Connect your projector to your computer, following the instructions provided by your projector manufacturer. Turn on the projector and wait till you see it project its default image. On the computer, hold the Function (Fn) key and press F8 (CRT/LCD). (You may need to press F8 twice.) The projector will display your desktop wallpaper.
11. Select **File/Run**, and you will see the BOARDWARE display on your computer. Click on the Restore Down icon (the double box next to the red X in the upper right corner of the screen). Click and hold on the blue bar at the very top of the screen and drag the display to the left off your computer screen and on to the projector display. Use the mouse pointer to position the display in the projected image.
12. You can now minimize the main screen and maximize your timing software. To test your scoreboard display, use the **Diagnostics** function in the menu: **Meets/ Diagnostics/Scoreboard** (for TIMEWARE 2 or MEETWARE) or **Match/Diagnostics** (for POLOWARE 2).
13. To **Minimize** the BOARDWARE display, click on the IST logo on the top right. With the scoreboard display minimized, you can also minimize the menu screen to display other Windows programs.
14. To **Restore** the display, click on the **BOARDWARE** button on the Windows Task Bar. **IF YOU HAVE MINIMIZED A DISPLAY DO NOT SELECT RUN AGAIN**. You will get an error message that will cause BOARDWARE to shut down.
15. To close the BOARDWARE display, click on the logo in the upper left corner of the screen. Maximized BOARDWARE and select **File/Exit**. Repeat steps 10-12 each time you want to use BOARDWARE.

If you need additional help, please don't hesitate to contact us. While we've thoroughly tested BOARDWARE, it is always possible that you may find a bug in the program. If you could let us know what happened and what you were doing at the time, we can get you a fix as quickly as possible. You can reach us 24 hours a day at our "800" number below. After hours, press "1" to leave a message and have us paged or "2" to just leave a message. Be sure to leave your name, team and a call-back number.



International Sports Timing
3286 Kentland Ct. S.E.
Grand Rapids, MI 49548
Phone: 800/835-2611 (North America only)
Phone: 01 616/247-1033 (Worldwide)
Fax: 616/247-0086
Email: info@istime.com